

PMYS DR 8 SOCKET

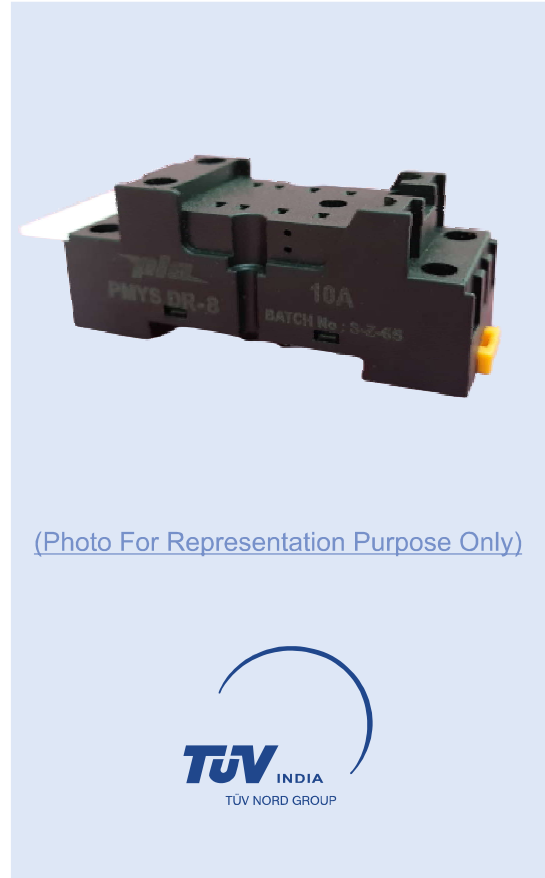
Formerly known as SDR PMY 8 Din Rail Socket

NEW



TECHNICAL SPECIFICATIONS

TYPE	PMYS DR 8 PIN
TERMINAL TYPE	Din Rail Or Panel Mountable
CONTACT CONFIGURATION	8 Pin
RATED CARRYING CURRENT (RESISTIVE) AT 24 VDC / 250 VAC	10 A
BODY MATERIAL	High Electric Grade Bakelite
CONTACT MATERIAL	Electrical Grade Phosphor Bronze Spring Action Tubular Contacts Electroplated
TERMINALS	Brass Electroplated
DI-ELECTRIC STRENGTH	2500 VAC
MAXIMUM TIGHTENING TORQUE	0.6 Nm
INSULATION RESISTANCE AT 500 VDC AT 27°C & + 65% RH	500MΩ
AMBIENT TEMPERATURE	-40 C To + 70°C
ALL DIMENSIONS ARE IN MM (W X L X H) APPROX.	25.4 X 66.7(+2.0)X 29.5
MAX WEIGHT IN GRAMS (APPROX.)	30 gms
MOUNTING	Din Rail & Screw
STANDARDS	(EN/DIN Sequential Numbering According to EN 60947 & IEC 61810)



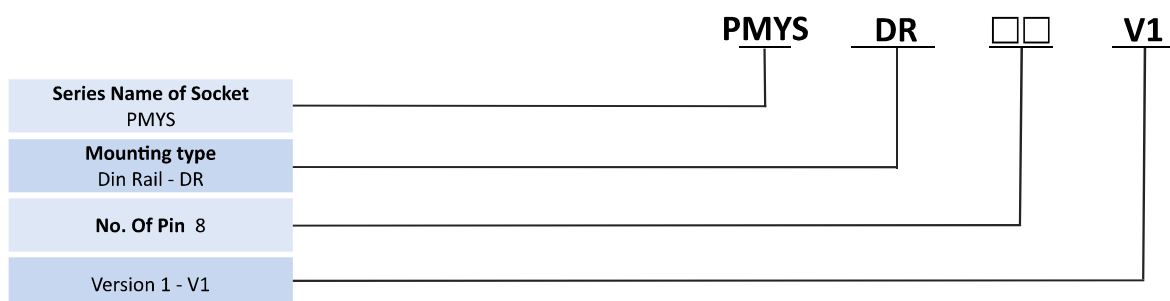
(Photo For Representation Purpose Only)



APPLICATIONS

- Ideal Substitute for Costly Relays & Contractors having Front Screw Terminals For Plug in Module & Instrument

ORDERING CODE FOR RELAY



NOTE:-

- 1) Recommended for PMY 2C series relays for Din Rail Mount.
- 2) All Specification / Dimensions subject to Tolerance.
- 3) Any Techno commercial changes is / are prerogative of manufacturer / management of the company which can be done without any notice.



+91 9152626104



+91 7045459530



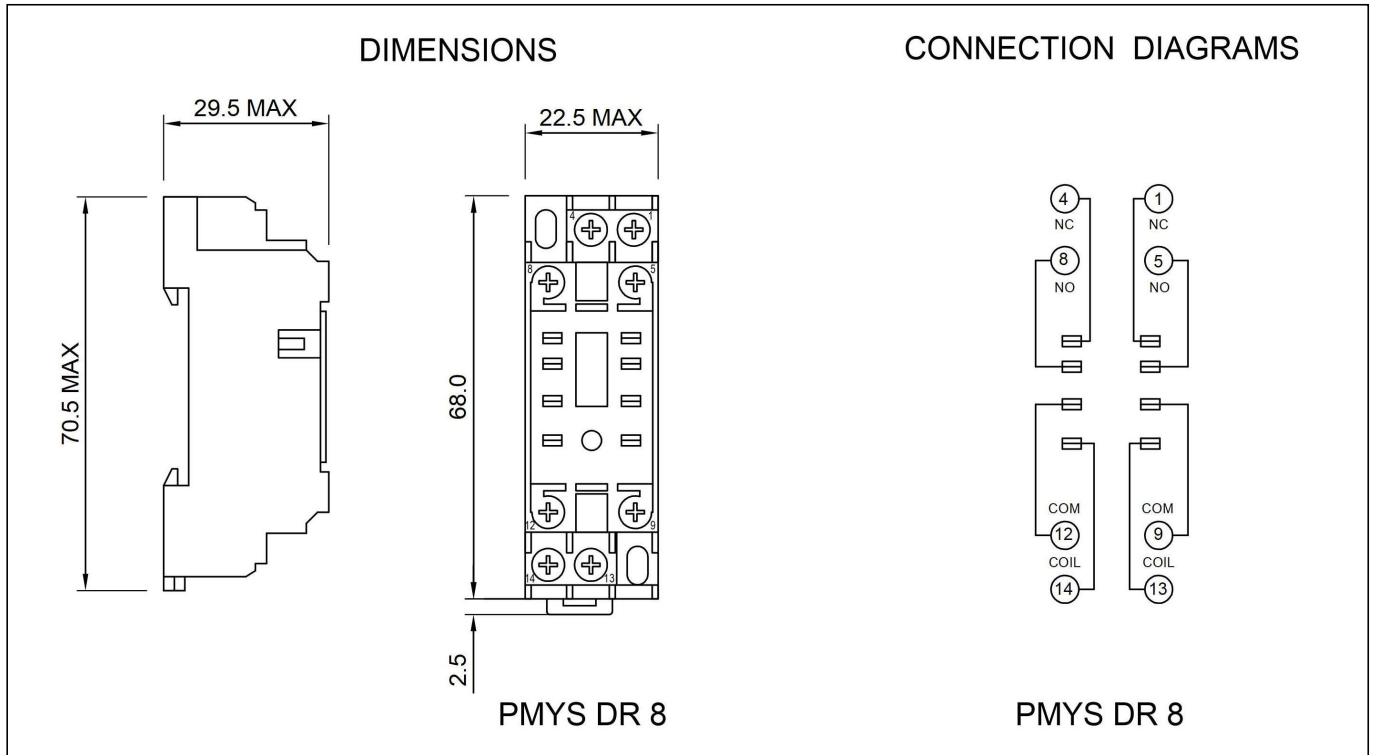
sales@plarelays.com



www.plarelays.com

1

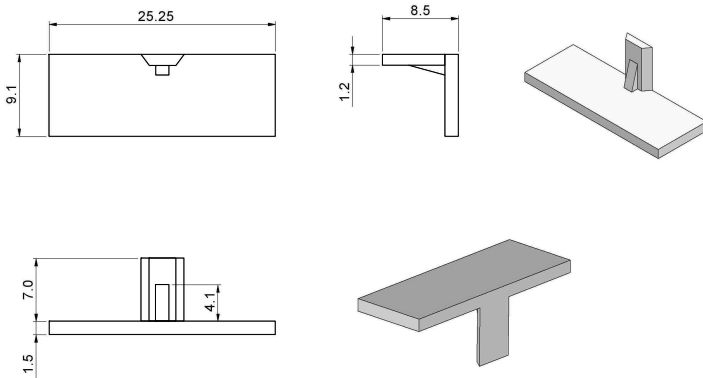
DIMENSIONS



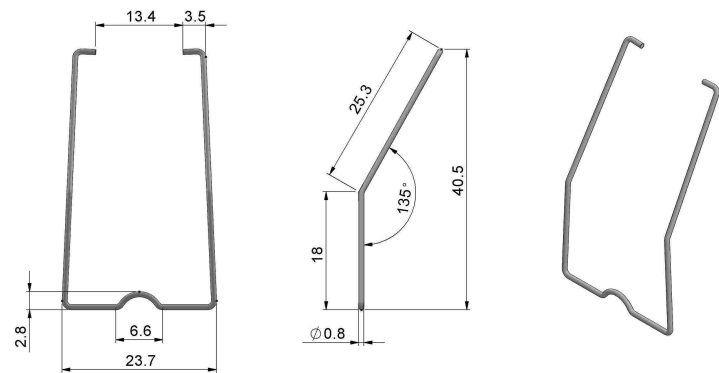
* Without Accessories

ACCESSORIES

LABELING TAG



RETAINER CLIP



* Accessories will be charged extra.

NOTE :- 1) In case no tolerance shown in outline dimensions : Outline dimension 1mm, tolerance should be $\pm 0.2\text{mm}$
Outline dimension 1mm and 5mm, tolerance should be $\pm 0.3\text{mm}$ Outline dimension 5mm tolerance should be $\pm 0.4\text{mm}$
2) The tolerance without indicating for PCB layout is always $\pm 0.2\text{mm}$



+91 9152626104



+91 7045459530



sales@plarelays.com



www.plarelays.com