

# PMYS DR 8 SOCKET

Formerly known as SDR PMY 8 Din Rail Socket

NEW



## TECHNICAL SPECIFICATIONS

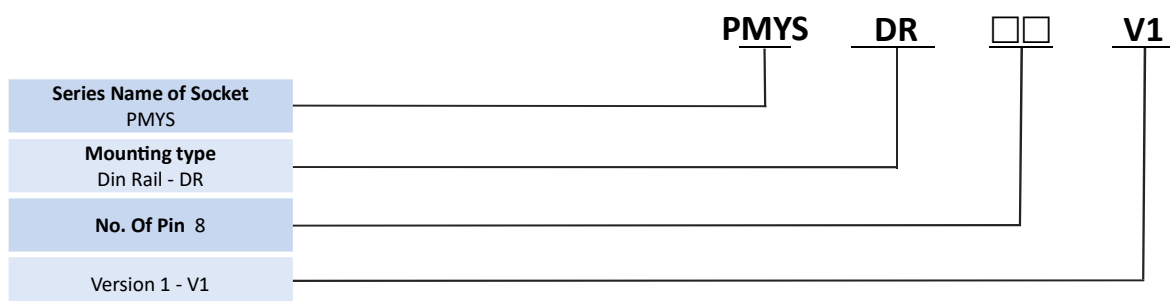
TYPE	PMYS DR 8
TERMINAL TYPE	Din Rail Or Panel Mountable
CONTACT CONFIGURATION	8 Pin
RATED CARRYING CURRENT (RESISTIVE) AT 24 VDC / 250 VAC	10A
BODY MATERIAL	High Electric Grade Bakelite
CONTACT MATERIAL	Electrical Grade Phosphor Bronze Spring Action Tubular Contacts Electroplated
TERMINALS	Brass Electroplated
DI-ELECTRIC STRENGTH	2 kV
MAXIMUM TIGHTENING TORQUE	0.6 Nm
INSULATION RESISTANCE AT 500 VDC AT 27°C & + 65% RH	500MΩ
AMBIENT TEMPERATURE	-40 C To + 70°C
ALL DIMENSIONS ARE IN MM (W X L X H) APPROX.	25.4 X 66.7(+2.0)X 29.5
MAX WEIGHT IN GRAMS (APPROX.)	30 gms
MOUNTING	Din Rail & Screw
STANDARDS	(EN/DIN Sequential Numbering According to EN 60947 & IEC 61810)



## APPLICATIONS

- Ideal Substitute for Costly Relays & Contractors having Front Screw Terminals For Plug in Module & Instrument

## ORDERING CODE FOR RELAY



### NOTE:-

- 1) Recommended for PMY 2C series relays for Din Rail Mount.
- 2) All Specification / Dimensions subject to Tolerance.
- 3) Any Techno commercial changes is / are prerogative of manufacturer / management of the company which can be done without any notice.



+91 9152626104



+91 7045459530



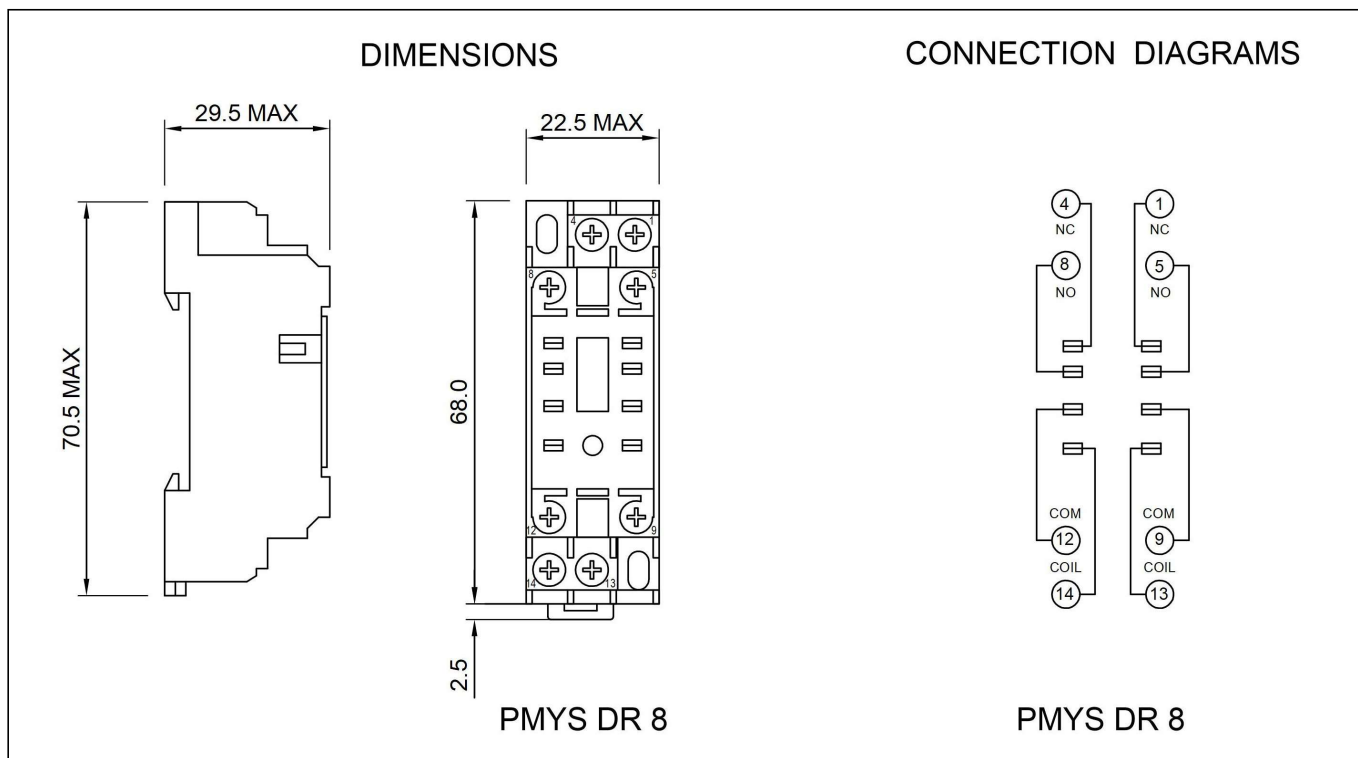
sales@plarelays.com



www.plarelays.com

1

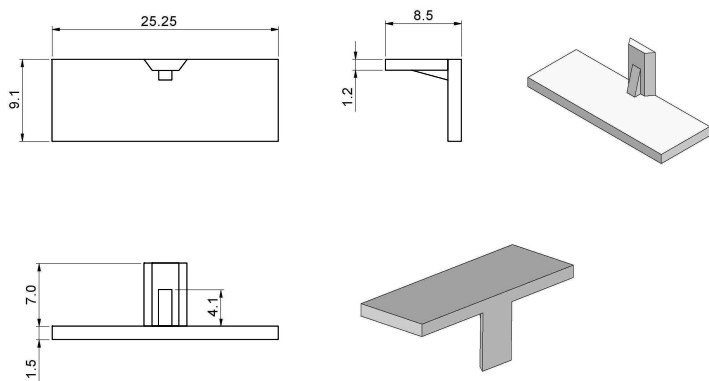
## DIMENSIONS



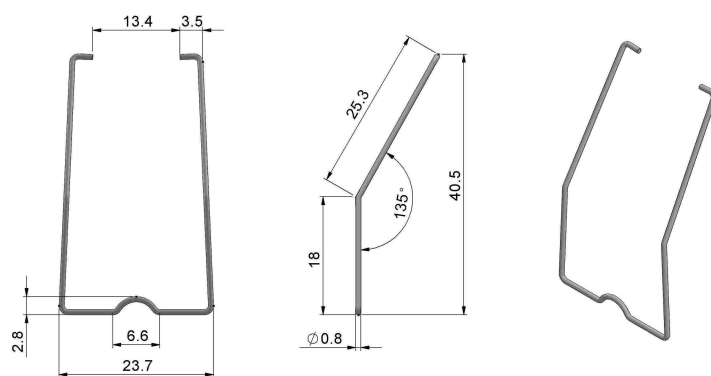
\* Without Accessories

## ACCESSORIES

### LABELING TAG



### RETAINER CLIP



\* Accessories will be charged extra.

**NOTE :-** 1) In case no tolerance shown in outline dimensions : Outline dimension 1mm, tolerance should be  $\pm 0.2\text{mm}$   
Outline dimension 1mm and 5mm, tolerance should be  $\pm 0.3\text{mm}$  Outline dimension 5mm tolerance should be  $\pm 0.4\text{mm}$   
2) The tolerance without indicating for PCB layout is always  $\pm 0.2\text{mm}$