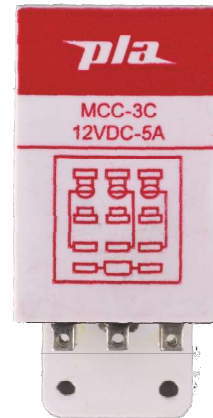


## TECHNICAL SPECIFICATIONS

TYPE		MCC
TERMINAL TYPE		Solder
CONTACT CONFIGURATION		1C / 2C / 3C
RATED CARRYING CURRENT (RESISTIVE) AT 24 VDC / 250 VAC		5A                      10A
CONTACT MATERIAL		Silver alloy
INITIAL CONTACT RESISTANCE (MAX)		0.050 Ω
COIL NOMINAL VOLTAGES	DC	6-220 V
	AC	12-240V @ 50Hz
OPERATING POWER (MIN-MAX) FOR DC COIL		0.72 - 1.21 W
OPERATING POWER (MIN-MAX) FOR AC COIL		2.02 - 2.43 VA
DIELECTRIC STRENGTH BETWEEN	OPEN CONTACT	1500 V <sub>RMS</sub>
	COIL TO CONTACT	2000 V <sub>RMS</sub>
INSULATION RESISTANCE AT 500 VDC AT 27°C & 65% RH		100 MΩ
OPERATE TIME (MAX)		20 ms
RELEASE TIME (MAX)		10 ms
AMBIENT TEMPERATURE		-25°C To +55°C
ELECTRICAL LIFE (NO OF OPERATIONS)		10 <sup>5</sup>
MECHANICAL LIFE (NO OF OPERATIONS)		10 <sup>7</sup>
ALL DIMENSIONS ARE IN MM (W X L X H) APPROX.		29.0 x 43(+15.5) x 34.5
MAX WEIGHT IN GRAMS (APPROX.)		53 gms
STANDARDS		IEC 61810-1 JSS-50711 & JSS50101



(Photo For Representation Purpose Only)



## SALIENT FEATURES

- Elegant / Sturdy and Light Weight
- High Reliability

## APPLICATIONS

- Machine Tools
- Textile Machines
- Bio-medical Instruments & Appliances
- Control Panels
- Industrial & Consumer electronics
- Instrumentatio
- Temperature Controllers
- Electrical Equipments & Appliances
- Stabilizers
- Automation & Remote Control Systems

**NOTE:-** 1) This product is type tested by TUV Nord as per IEC 61810-1:2015-A1:2019

2) All Specification / Dimensions subject to Tolerance.

3) Contact form 1 A and 1 B available on request .

4) Any Techno commercial changes is / are prerogative of Manufacturer / Management of the company which can be done without any notice.



+91 9152626104



+91 7045459530



sales@plarelays.com

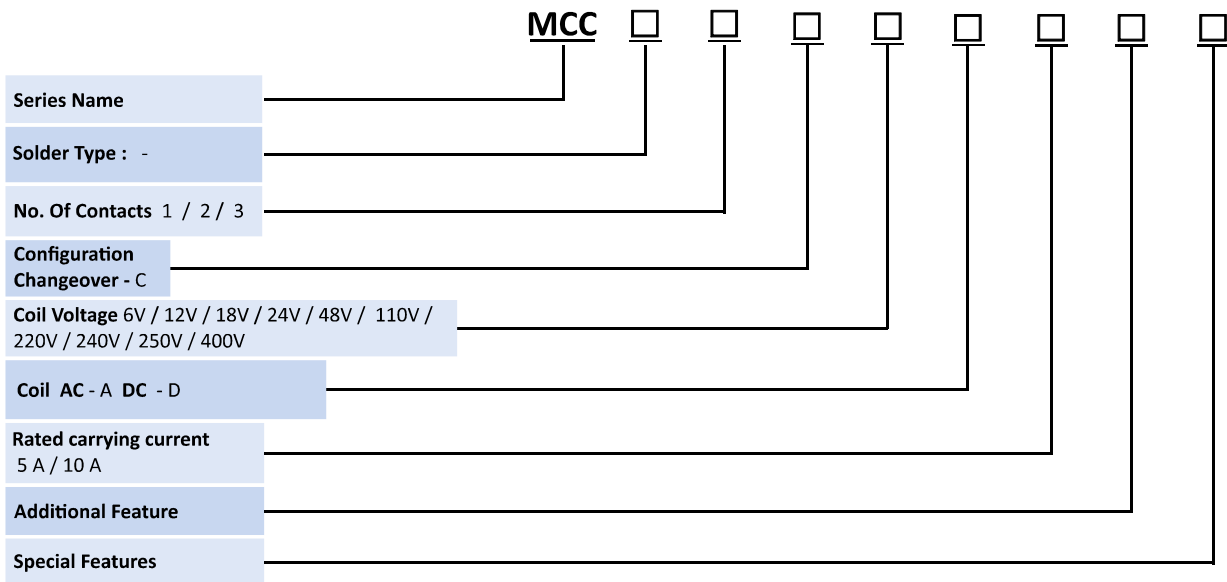


www.plarelays.com

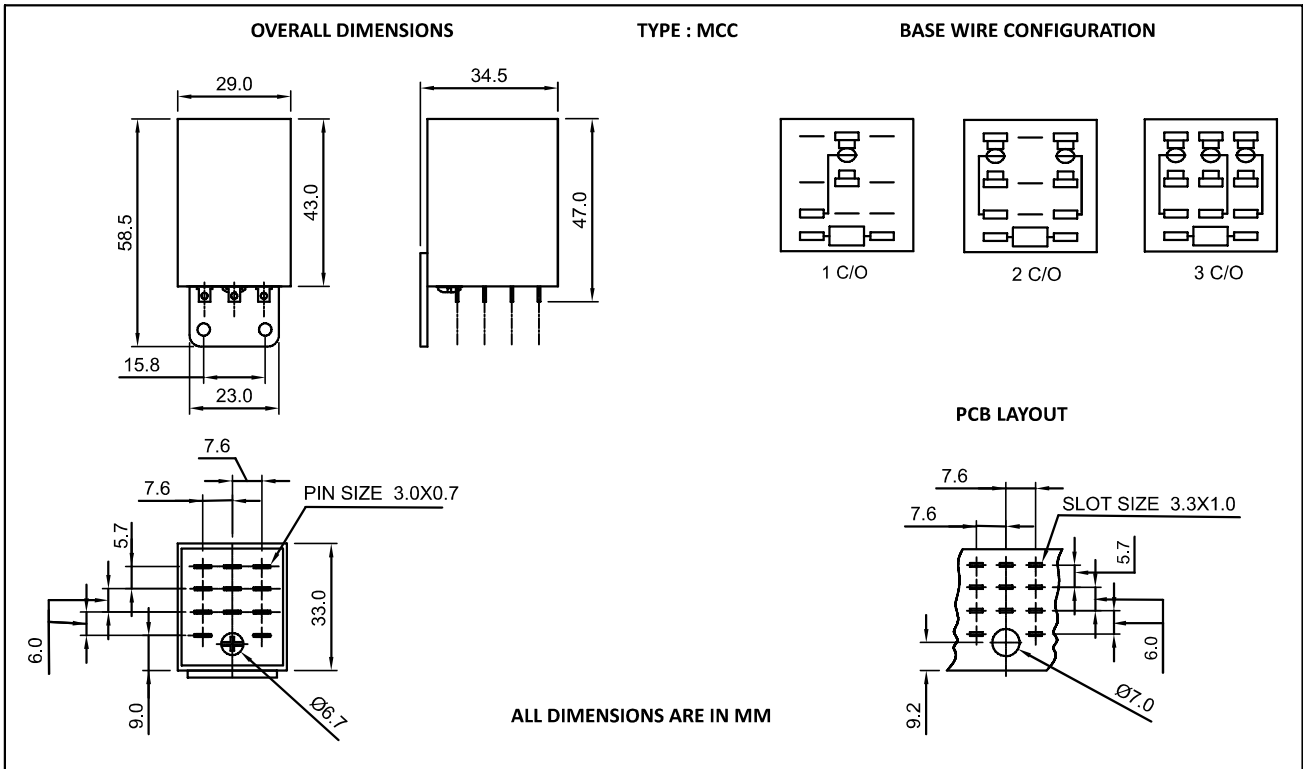
## COIL – DATA (5A / 10A- MCC) (ALL VALUES AT 27°C ± 2°AMBIENT, COLD START)

NOMINAL VOLTAGE (V)	RESISTANCE IN OHM'S ± 10% Ω		MUST OPERATE VOLTAGE (V)	MUST RELEASE VOLTAGE (V)	OPERATING POWER FOR COIL	
	DC RELAY	AC RELAY			DC (W)	AC (VA)
6	30	7	4.8	0.6	1.2	2.06
12	1C	-	9.6	1.2	0.72	-
	2C	30	9.6	1.2	0.72	1.92
	3C	-	9.6	1.2	0.96	-
18	390	-	14.4	1.8	0.83	-
24	500	110	19.2	2.4	1.15	2.09
48	2.25k	440	38.4	4.8	1.02	2.09
110	10k	2.4k	88	11	1.21	2.02
220	50k	-	176	22	1.21	-
240	-	9.5k	192	24	-	2.43
250	54k	-	200	25	1.25	-
400	-	27k	320	40	-	2.37

## ORDERING CODE FOR RELAY



## DIMENSIONS



**NOTE :-** 1) In case no tolerance shown in outline dimensions : Outline dimension 1mm, tolerance should be  $\pm 0.2$ mm  
 Outline dimension 1mm and 5mm, tolerance should be  $\pm 0.3$ mm Outline dimension 5mm tolerance should be  $\pm 0.4$ mm  
 2) The tolerance without indicating for PCB layout is always  $\pm 0.2$ mm



+91 9152626104



+91 7045459530



sales@plarelays.com



www.plarelays.com