

TECHNICAL SPECIFICATIONS

TYPE		PCC / LPR 30
TERMINAL TYPE		Solder / Lugs
CONTACT CONFIGURATION		1C, 2C, 3C 1 N/O, 2 N/O, 3 N/O
RATED CARRING CURRENT (RESISTIVE) AT 24 VDC / 250 VAC		30A
CONTACT MATERIAL		Silver alloy
INITIAL CONTACT RESISTANCE (MAX)		0.050 Ω
COIL NOMINAL VOLTAGES	DC	12 - 220 V
	AC	24 - 240V @ 50Hz
OPERATING POWER (MIN-MAX) FOR DC COIL		1.86 - 2.22 W
OPERATING POWER (MIN-MAX) FOR AC COIL		3.72 - 5.76 VA
DIELECTRIC STRENGTH	BETWEEN OPEN CONTACT	2000 VAC
	COIL TO CONTACT	2000 VAC
INSULATION RESISTANCE AT 500 VDC AT 27°C & 65% RH		100 MΩ
OPERATE TIME (MAX)		20 ms
RELEASE TIME (MAX)		10 ms
AMBIENT TEMPERATURE		-25°C To + 55°C
ELECTRICAL LIFE (NO OF OPERATIONS)		10 ⁵
MECHANICAL LIFE (NO OF OPERATIONS)		10 ⁶
ALL DIMENSIONS ARE IN mm (W x L x H)		46.5 X 66.7(+9.6) X 50
MAX WEIGHT IN GRAMS		125 gms
MOUNTING		Metal Base Plate
STANDARDS		Meeting as per IEC 61810-1



SALIENT FEATURES

- Compact Size
- Screw Terminals
- Elegant
- Reliable

APPLICATIONS

- | | | |
|-----------------------|--------------------|--------------------|
| • Voltage Stabilizers | • Furnace Controls | • Process Controls |
| • Inventors | • Heaters | • Vending Machines |
| • Domestic Appliances | • Air conditioners | |

NOTE:- 1) This product is type tested by TUV Nord as per IEC 61810-1:2015-A1:2019

2) Recommended Socket : - PRS S 1

3) All Specification / Dimensions subject to Tolerance.

4) Any techno commercial changes is / are prerogative of manufacturer / management of the company which can be done without any notice.



+91 22 25106104/05



+91 7045459530



sales@plarelays.com

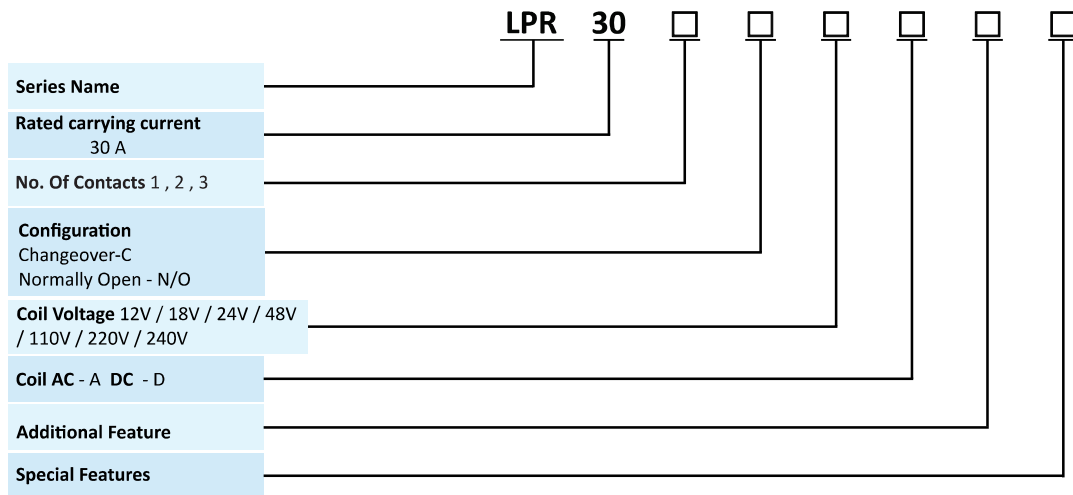


www.plarelays.com

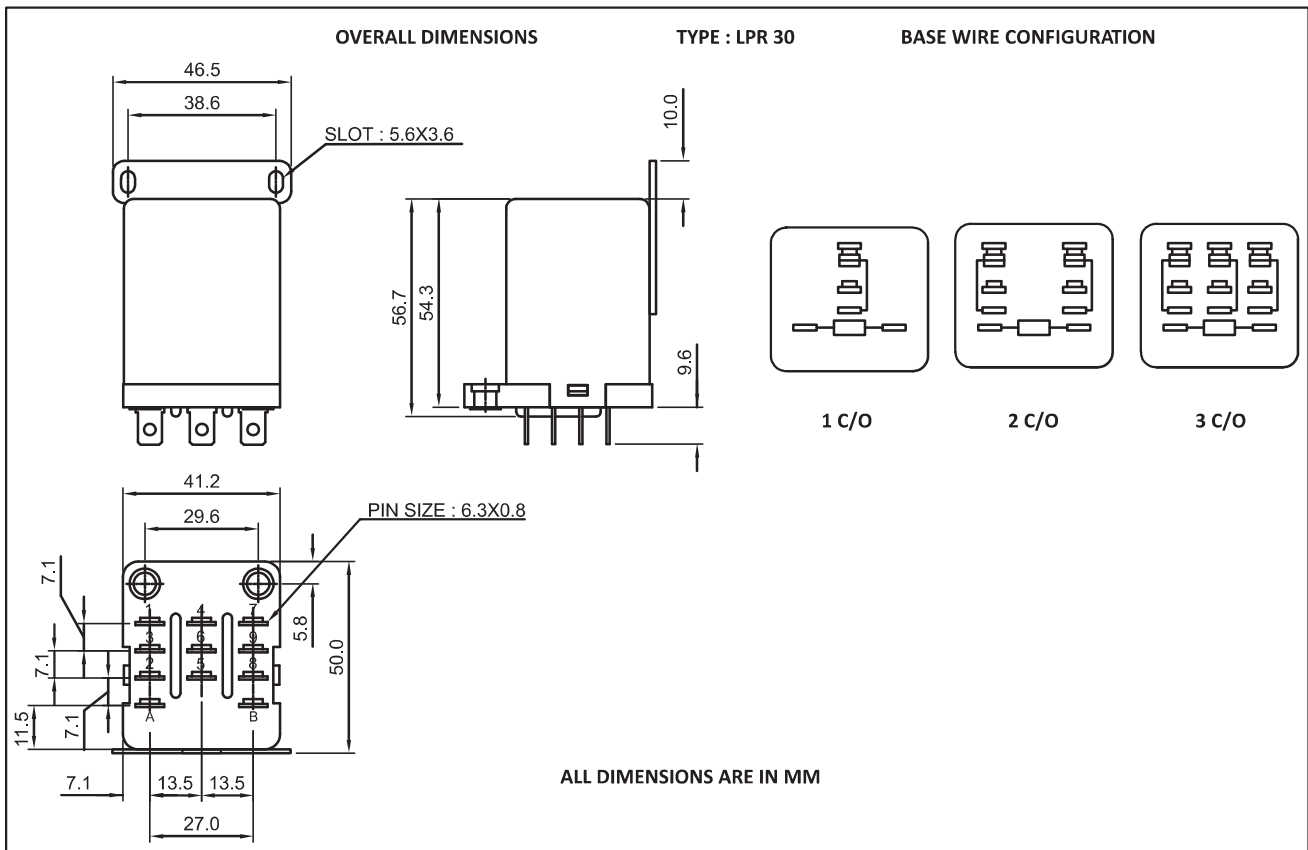
COIL – DATA (ALL VALUES AT 27°C ± 2°AMBIENT, COLD START)

NOMINAL VOLTAGE (V)	RESISTANCE ± 10% (Ω)		MUST OPERATE VOLTAGE (V)	MUST RELEASE VOLTAGE (V)	OPERATING POWER FOR COIL	
	1C	2C & 3C			1C	2C & 3C
12 VDC	120	74	9.6	1.2	1.2 W	1.95 W
18 VDC	-	150	14.4	1.8	-	2.16 W
24 VDC	480	260	19.2	2.4	1.2 W	2.22 W
48 VDC	-	1.2k	38.4	4.8	-	1.92 W
110 VDC	-	5.5k	88	11	-	2.20 W
220 VDC	-	26k	176	22	-	1.86 W
24 VAC	-	40	19.2	2.4	-	5.76 VA
115 VAC	-	1.3k	88	11	-	3.72 VA
240 VAC	4.7K	4.7k	192	24	-	4.90 VA

ORDERING CODE FOR RELAY



DIMENSIONS



NOTE :- 1) In case no tolerance shown in outline dimensions : Outline dimension 1mm, tolerance should be ± 0.2 mm
Outline dimension 1mm and 5mm, tolerance should be ± 0.3 mm Outline dimension 5mm tolerance should be ± 0.4 mm
2) The tolerance without indicating for PCB layout is always ± 0.2 mm